



U

LISBOA

---

UNIVERSIDADE  
DE LISBOA

# “ THE UNIVERSITY IS A SPACE OF FREEDOM, THOUGHT AND CREATION

University of Lisbon (ULisboa) is a space of action: **a space where the future can be anticipated and done with the knowledge offered by our University.**



**We are driven by a sense of purpose to find the best solutions to current problems, but also to future ones.**





At ULisboa we offer everyone an opportunity as an important part of our social commitment. We train responsible, free, and highly qualified citizens with the essential skills for the digital and green transition. We offer innovative learning and teaching opportunities in an inclusive environment that promotes free discussion of ideas, extensive participation of its entire community, and equal access to our offers. Diversity, inclusion and social cohesion are important components to create a sustainable University. ”



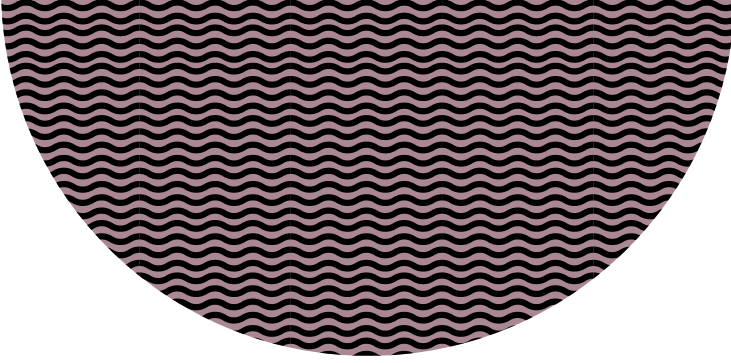
**Luís Ferreira**  
Rector

# MISSION

As an institution of education and science committed to the progress of society, ULisboa is based on the creation, transfer and social and economic reinforcement of knowledge and culture. Our core values are:

- **Intellectual freedom and respect for ethics**
- **Democratic participation**
- **Balance between autonomy and cohesion**
- **Subsidiarity and complementarity**
- **Evaluation and openness to society**





Uncertainty dominates much of what characterizes today's world. Our relationships with others and our surrounding are deeply transformed by the speed at which technological innovations arise. In this context, it is essential to build new paths that combine economic growth with the sustainability of societies.

ULisboa has a clear voice in relation to the challenges posed by today's society.

**It is in this context of development that the ULisboa positions itself.**

# ULISBOA IN FIGURES

The most prestigious Portuguese university and one of the leading European universities. A **privileged space for teaching, research, innovation, sport, culture and art.**

We have inherited a university tradition with more than seven centuries: the ULisboa got its current configuration in July 2013, after the merger of the two main universities of Lisbon.



**18**  
SCHOOLS



**9**  
CAMPI



**470**  
PROGRAMMES



**52 126**  
STUDENTS



**9 723**  
INTERNATIONAL STUDENTS  
FROM 112 NATIONALITIES



Involved with Portuguese society and the Lisbon region, we take our responsibility for promoting Lisbon as one of Europe's greatest culture and science capitals.



**4 138**

ACADEMIC STAFF



**608**

FULL TIME RESEARCHERS



**2 357**

NON-ACADEMIC STAFF

# OUR SCHOOLS

**Portugal's largest University and one Europe's largest universities.**

The quality of teaching, research, innovation and culture in our Schools and Research Units attracts an increasing number of talents.



**18**  
SCHOOLS



[ulisboa.pt/en/escolas](https://ulisboa.pt/en/escolas)

- 01 LISBON SCHOOL OF ARCHITECTURE
- 02 FACULTY OF FINE ARTS
- 03 FACULTY OF SCIENCES
- 04 FACULTY OF LAW
- 05 FACULTY OF PHARMACY
- 06 SCHOOL OF ARTS AND HUMANITIES
- 07 FACULTY OF MEDICINE
- 08 FACULTY OF DENTAL MEDICINE
- 09 FACULTY OF VETERINARY MEDICINE
- 10 FACULTY OF HUMAN KINETICS
- 11 FACULTY OF PSYCHOLOGY
- 12 INSTITUTE OF SOCIAL SCIENCES
- 13 INSTITUTE OF EDUCATION
- 14 INSTITUTE OF GEOGRAPHY AND SPATIAL PLANNING
- 15 SCHOOL OF AGRICULTURE
- 16 INSTITUTE OF SOCIAL AND POLITICAL SCIENCES
- 17 ISEG - LISBON SCHOOL OF ECONOMICS & MANAGEMENT
- 18 TÉCNICO LISBOA

# ALL FIELDS OF KNOWLEDGE

In our Schools, we have one of the best and most diversified training offers, distributed by multiple study cycles that lead to bachelor's, master's and doctoral degrees, in all fields of knowledge.

- | Natural Sciences
- | Engineering and Technology
- | Medical and Health Sciences
- | Agricultural and Veterinary Sciences
- | Social Sciences, Business and Law
- | Humanities and the Arts



**A diploma from the ULisboa is a guarantee of solid, coherent and up-to-date scientific and human training, which allows the graduate to successfully respond to any challenge.**

## PROGRAMMES



[ulisboa.pt/en/info/programmes](https://ulisboa.pt/en/info/programmes)

## NON-DEGREE PROGRAMMES

At ULisboa, the non-degree programme offer allows to keep up with the labour market and the needs to expand the knowledge of professionals.



# OUR STUDENTS' PROFILE

**We attract the best,** most well-prepared students, with the highest skills, who actively seek to learn and develop all their competences.



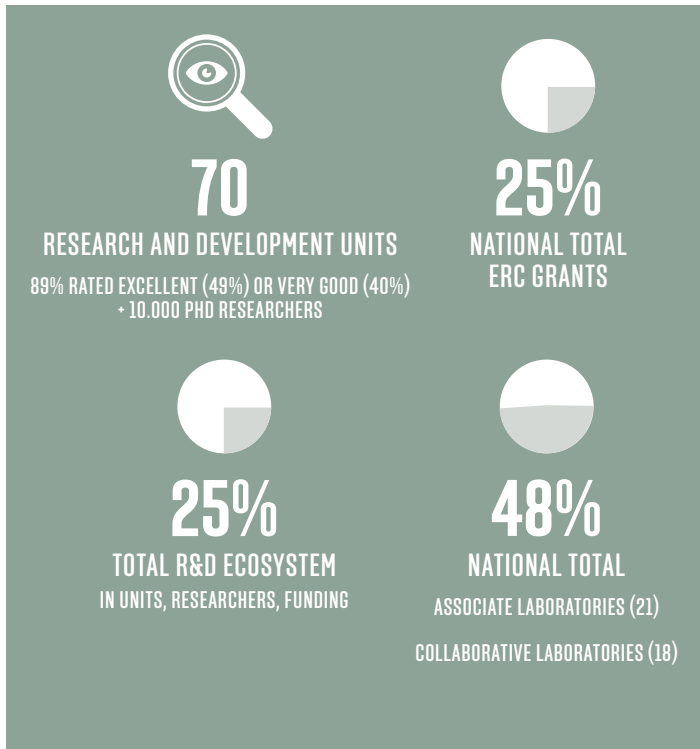
**We train committed citizens and competent professionals.** To this end, the University of Lisbon attracts the best teachers and offers the best physical, administrative and supporting conditions. We believe that mastering the specific skills of knowledge or a profession is not enough: at ULisboa we provide our

students with a wider set of cross-sectional skills, which are gained not only in contact with their colleagues, teachers and remaining academic community, but also through the sports, recreational, social, cultural, and international offer that the University and the city of Lisbon offer them.

We develop skills to face challenging situations in a sustained way that allow us to get innovative solutions to problems. **This is why our alumni are different.**



# A RESEARCH UNIVERSITY



At ULisboa, we believe that impact comes from collaboration. That is why we come together to build strategic International Cooperation partnerships, participate in National and International Networks, and develop collaborative research projects that cross borders and disciplines.

We connect with universities, research centres and companies all over the world,

from Europe to Brazil, from China to the Middle East and the PALOP countries, to attract talent, share knowledge and open up new possibilities for students, researchers and technical teams.

ULisboa's competitiveness in research output and the development of research projects is a reflection of the strong cooperation with other entities in the region, the country and the world.

# GIFTED WITH AN INTERDISCIPLINARY DNA

Interdisciplinarity is a passport to a broader and more integrative approach to challenges that are imposed to contemporary societies.

Dedicated to research and advanced training, the **Colleges of ULisboa** combine teachers and researchers from different Schools and Research Units, who associate for the developing joint initiatives and creating synergies between their member due to their cross-sectional nature.

COLLEGES



[ulisboa.pt/en/info/ulisboa-colleges](https://ulisboa.pt/en/info/ulisboa-colleges)

## COLLEGE OF POLAR SCIENCES AND EXTREME ENVIRONMENTS

Creates synergies across strategic lines such as the sciences of the cryosphere, climate modelling, polar ecosystems and extreme environments, remote detection, space environment, and social sciences.

## COLLEGE FOOD, FARMING AND FORESTRY

It is the catalyst for generating transdisciplinary knowledge in the areas of food, agriculture and forestry at ULisboa.

## MIND-BRAIN COLLEGE

Its scientific domain is the study of the mind and brain, and it seeks to better understand the mind and brain and their social and economic implications.

## COLLEGE OF CHEMISTRY

Contributes to cohesion and a better use of ULisboa's resources, through the transdisciplinarity of Chemistry with other sciences.

## TROPICAL COLLEGE

Contributes to reducing inequalities between countries by promoting scientific and technological development, innovation, and teaching in tropical regions.

# WE ARE DRIVEN BY INNOVATION AND ENTREPRENEURSHIP

## BRIDGING SCIENCE, SOCIETY, AND INDUSTRY



277

INTERNATIONAL PATENTS



+1000

STARTUPS AND SPIN-OFFS  
WITH A COMBINED VALUATION  
OF 20 BILLION EUR



67%

LISBON STARTUP  
ECOSYSTEM TOTAL VALUE

**We believe in science with real impact.** Through our research structures and partnerships, we spark meaningful dialogue between science and society. Whether it is education, aging, democracy, or the environment, we connect research to real-world challenges — helping shape informed public policies and tangible solutions.

**Turning knowledge into action.** By collaborating with industry and civil society, we promote knowledge and technology grounded in solid intellectual property frameworks. From identifying the right partners to signing collaboration agreements, we ensure that the innovations made at the University impact society at large.

**From idea to business,** we support academic entrepreneurs through our incubators and entrepreneurship hubs. We train and mentor researchers, foster mobility between Schools, and cultivate a culture of innovation — making entrepreneurship and knowledge valorization part of ULisboa's DNA.

# WE TRANSFER AND APPLY KNOWLEDGE

In close collaboration with the business and social sectors, we value the scientific knowledge generated at ULisboa socially and economically.

In this context arise the Interdisciplinary Thematic Networks of ULisboa, which include teachers and researchers

according to specific areas, partnering up with companies and public and social sector entities.

## NETWORKS



[ulisboa.pt/en/info/interdisciplinary-thematic-networks](https://ulisboa.pt/en/info/interdisciplinary-thematic-networks)

### AGRO network

Addresses scientific areas related to the Agri-food and Forestry sectors, so that the research produced within ULisboa is more effective when it comes to solving the challenges that society faces in these areas.

### SEA network

Generates a stimulating process of creating wealth and knowledge about the Sea, to increase the value of environmental, social, economic, historical, and future issues about the oceans.

### MOV network

Creatively addresses matters associated with smart urban mobility and seeks solutions that, reducing environmental impact, ensures the equity and social cohesion.

### HEALTH network

Operates at the interface between Science, Innovation and Public Policies, promoting collaborative actions to respond to national and international goals, through a strategic partnership network in healthcare.

### SUSTENTA network

Promotes collaboration to develop innovative and sustainable solutions, structured around the dimensions of research and innovation, teaching and students, sustainable campuses and community involvement.

# ULISBOA AND SUSTAINABILITY

At ULisboa, we are in a privileged position for a broad discussion about the challenges of sustainability in the new frontiers of knowledge. We combine cross-sectional scientific areas

aiming to achieving the UN Sustainable Development Goals. We constantly reflect on how we create, convey and value knowledge and culture socially and economically.



## Environmental Sustainability

Our goal is to plan strategies to reduce greenhouse gas emissions, minimize extreme weather events and deforestation, and counter excessive energy consumption and biodiversity loss, for more resilient and prosperous ecosystems.

## Social Sustainability

Having in mind human dignity, we aim to propose strategies for the promotion of health, well-being and education, as well as to ensure the human rights of particularly vulnerable groups, including precarious workers, minorities, women, children, the elderly and people with disabilities.

## Community Sustainability

We seek input to ensure more effective institutions, infrastructures and housing, make mobility more efficient, plan community management in a participatory and inclusive manner, integrate migrants and refugees, and preserve cultural heritage, for resilient and sustainable communities.

# SEEING THE WORLD THROUGH THE EYES OF ANOTHER

IS A FUNDAMENTAL ABILITY THAT WE SEEK TO DEVELOP

**From ULisboa to the World.  
From the World to ULisboa.**

We value the plurality of the fields of knowledge, and we attract students from all over the world, due to the quality of our education and research and to the open-mindedness that arises from the multicultural environment that is lived in ULisboa.

Our perspective is one of globalisation and cooperation for development: the challenges we face have no borders. **At ULisboa, our doors are open to the world.**



**112**

NATIONALITIES

(INTERNATIONAL STUDENTS)



**580**

INTERNATIONAL PARTNERS



**7 463**

INTERNATIONAL PROJECTS

(RESEARCH, INNOVATION AND TECHNOLOGY TRANSFER)

# HAND IN HAND WITH THE WORLD'S BEST

In Portugal, ULisboa leads the main international rankings and belongs to the group of the best universities in the world, regardless of the method or criteria that is used to measure its performance.

In rankings that value scientific activity criteria, we are systematically ranked among the world's best 200 universities. Some of our scientific areas, such as Marine-Ocean Engineering,

Oceanography, Civil Engineering, Remote Sensing, Geography, Agricultural Sciences and Veterinary Sciences are among the world's top 100.

## #1 IN PORTUGAL



**1<sup>st</sup>** RANKING UNIVERSITY IN PORTUGAL  
(SHANGHAI-ARWU, SCIMAGO, NTU, CWUR, URAP, CWTS-LEIDEN)

**5<sup>th</sup>** RANKING UNIVERSITY IN IBERO-AMERICAN SPACE  
(SCIMAGO)

**28<sup>th</sup>** RANKING EUROPEAN UNIVERSITY IN SCIENTIFIC  
PUBLICATIONS (CWTS-LEIDEN)

**1<sup>st</sup>** IN SCIENTIFIC PRODUCTION IN THE IBERIAN PENINSULA  
(CWTS-LEIDEN)



[ulisboa.pt/en/about-us#rankings](https://ulisboa.pt/en/about-us#rankings)



unite!

University Network for Innovation,  
Technology and Engineering

# WE ARE MEMBERS OF UNITE!

## A TECHNOLOGY-DEDICATED UNIVERSITY NETWORK

Unite! offers:

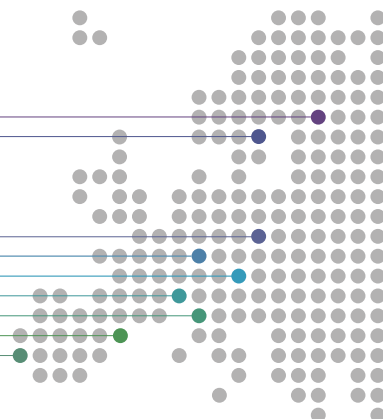
- **Mobility**, short-term programmes and summer schools.
- **Virtual campus**, including a digital platform for mobility, virtual spaces and online tools.
- **Teaching and Learning Academy**, with flexible study paths and innovative pedagogies.
- **Trans-regional network for innovation and entrepreneurship.**



[www.unite-university.eu](http://www.unite-university.eu)

Aalto University, Espoo/Helsinki  
KTH Royal Institute of Technology, Stockholm

Wrocław Tech (future full partner)  
Technical University of Darmstadt  
Graz University of Technology (future full partner)  
Grenoble INP-UGA  
Politecnico di Torino  
Universitat Politècnica de Catalunya · BarcelonaTech  
Universidade de Lisboa



# CULTURE AND COMMUNITY

## AN EXCITING EXPERIENCE EVERY DAY

At ULisboa we value culture and material heritage, which we put at the service of our community and society. Our museums, botanical gardens, collections and cultural heritage, of scientific, historical and artistic nature, are relevant in the Portuguese and international context.

### **National Museum of Natural History and Science**

Housing the largest scientific collections in Portugal, the Museum offers multiple exhibitions and educational activities engaging the public with nature and science.

### **Ajuda Botanic Garden**

Created in 1768, this is Portugal's oldest botanic garden. It occupies an area of 3.5 hectares, with unparalleled views of the city and many very special specimens of plants.

### **Lisbon Botanic Garden**

Classified as a national monument, the Garden is an oasis in the city center, with an area of more than 4 hectares and over 1200 plant species from all over the world.

### **Tropical Botanic Garden**

Also classified as a national monument, this is the largest botanic garden in Lisbon (7 hectares). It is specialised in rare tropical trees and plants.

### **University Stadium of Lisbon**

Forty hectares of a green area, dedicated to health, sports and university competition, right in the heart of the University.

### **Aula Magna**

Stage of solemn academic ceremonies and various shows, it is a unique room, of recognized value in the cultural panorama of the city.

### **Pavilion of Portugal**

Designed by the Architect Álvaro Siza Vieira for the 1998 Lisbon World Expo, it is one of the most emblematic buildings of contemporary Portuguese architecture. The space allows the dissemination and promotion of scientific, cultural, and artistic knowledge and the hosting of events and exhibitions.





# PORTUGAL

Located in south-western Europe and bathed by the Atlantic Ocean, Portugal is only a few hours away from any European capital. With about 3000 hours of sunshine a year, Portugal's mild climate and blue skies impress everyone.

Portugal is among the world's safest countries and its cost of living is considerably low when compared to other

European countries. With a vast cultural heritage and many leisure activities to offer, Portugal also has a unique gastronomy, with good wines and traditional dishes, where cod is king.

## MAIN FACTS

AREA	92 212 KM <sup>2</sup>
POPULATION	10 MILLION
CAPITAL	LISBON
CLIMATE	MEDITERRANEAN
LANGUAGE	PORTUGUESE
POLITICS	PARLIAMENTARY DEMOCRACY
CURRENCY	EURO

---

# LISBOA

## THE CITY WHERE EVERYONE WANTS TO BE

Illuminated and cosmopolitan, Lisbon is a mirror of light and colour, where the natural and architectural beauty is unequivocal. An international city that never stops and where there is always something new to discover.



WWW.ULISBOA.PT



How much time  
does time have?

---

## FROM LISBON TO THE WORLD

Design: DCRI | may '25



Ulisboa reserves its right to change the information  
on this brochure without previous notice.